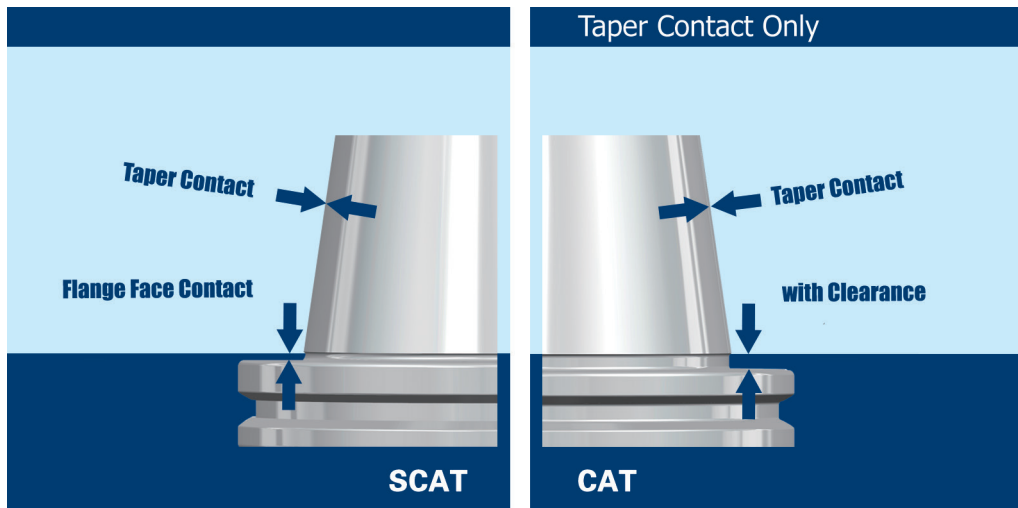


**TOOL HOLDERS**

---

**SCAT**

## SCAT DualDrive (Double Contact) Tool Holders



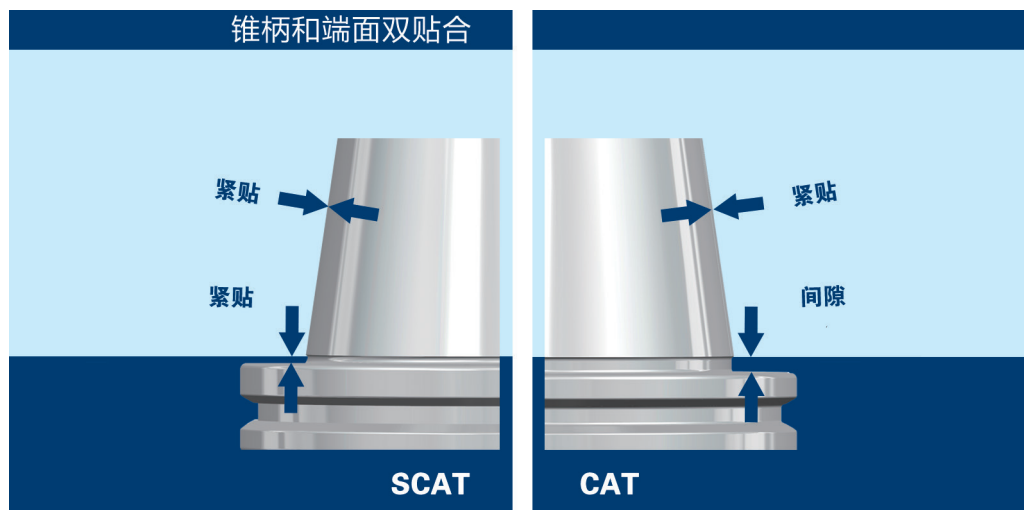
Taper and Flange Face Dual Contact System Advantages:

- \* Improve tool holder stability when high speed working.
- \* Improve workpiece surface finish.
- \* Improve working dimension accuracy.
- \* Improve ATC repeatability.
- \* Improve the roundness when boring operation.
- \* Extend cutting tool life.

ORDER SPECIFICATION:

PLEASE ORDER SCAT SPINDLE MACHINING CENTERS FOR BETTER PERFORMANCE.

## SCAT 双接触刀柄



SCAT

使用 SCAT 双接触刀柄优势：

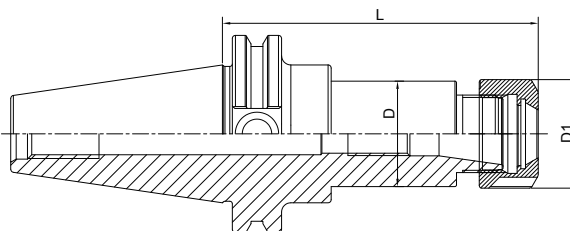
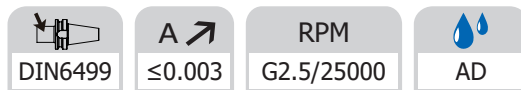
- \* 高速加工时提高刀柄稳定性；
- \* 提高工件表面光洁度；
- \* 提高加工精度；
- \* 提高 ATC 的重复精度；
- \* 提高镗孔加工圆度；
- \* 增加刀具使用寿命。

订购说明：

为了更好的使用效果，请订购带 SCAT 主轴的加工中心。

## ER Collet Chuck with UM Nut

### ER 弹簧夹头刀柄

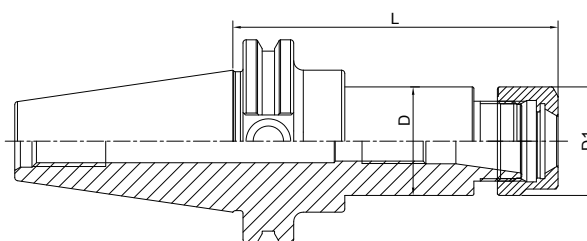
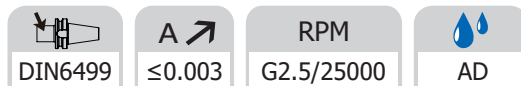


Size	D	D1	L	Capacity
SCAT40-ER16UM-2.5"	44.45	32	2.5"	1-10
SCAT40-ER20UM-2.5"	34	35	2.5"	1-13
SCAT40-ER25-2.5"	42	42	2.5"	2-16
SCAT40-ER32-2.5"	44.45	50	2.5"	2-20
SCAT40-ER40-3"	50	63	3"	3-26
SCAT40-ER16UM-4"	28	32	4"	1-10
SCAT40-ER20UM-4"	34	35	4"	1-13
SCAT40-ER25-4"	42	42	4"	2-16
SCAT40-ER32-4"	44.45	50	4"	2-20
SCAT40-ER40-4"	50	63	4"	3-26

**SCAT**

## ER Collet Chuck with Hex Nut

### ER 弹簧夹头刀柄



Size	D	D1	L	Capacity
SCAT40-ER11-2.5"	19	19	2.5"	1-7
SCAT40-ER16-2.5	44.45	28	2.5"	1-10
SCAT40-ER20-2.5	34	34	2.5"	1-13
SCAT40-ER11-4"	19	19	4"	1-7
SCAT40-ER16-4"	28	28	4"	1-10
SCAT40-ER20-4"	34	34	4"	1-13