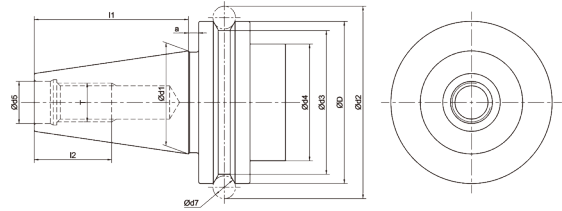
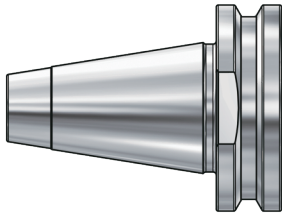


ISO TOOL HOLDERS

ISO Taper Standard ISO 锥柄标准

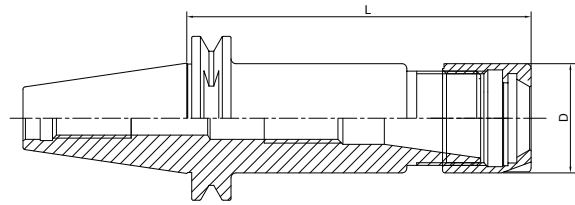

ISO

Size	D	d1	d2	d3	d4	d5	d7	l1	l2
ISO30	50	31.75	59.3	44.3	45	13	7	47.8	24
ISO40	63.55	44.45	72.3	56.25	50	17	7	68.4	32

Material: Alloyed case hardened steel
Surface Treatment: Blackening and Bright
Taper tolerance: <AT3
Hardness: HRC 56-60
Carbon depth: 0.8±0.2mm
Surface Roughness: Ra<0.2µm
Balancing: G2.5/25000
Cooling: AD

ER Collet Chuck without Drive Slots
ER 弹簧夹头刀柄

DIN6499	A ≤ 0.003	RPM G2.5/25000	AD
---------	----------------	----------------	----

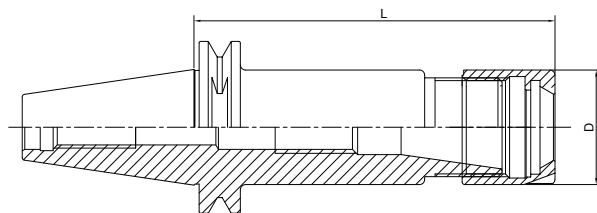


Size	D	L	Capacity
ISO10-ER11-25	19	25	1-7
ISO20-ER16-35	28	35	1-10
ISO20-ER20-35	34	35	1-13
ISO25-ER16-35	28	35	1-10
ISO25-ER20-35	34	35	1-13
ISO30-ER16-50	28	50	1-10
ISO30-ER20-50	34	50	1-13

ISO

ER Collet Chuck without Drive Slots
ER 弹簧夹头刀柄

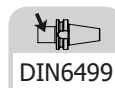
DIN6499	A ≤ 0.003	RPM G2.5/25000	AD
---------	----------------	----------------	----



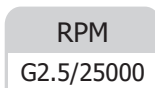
Size	D	L	Capacity
ISO20-ER16MS-35	22	35	1-10
ISO20-ER20MS-35	28	35	1-13
ISO25-ER16MS-35	22	35	1-10
ISO25-ER20MS-35	28	35	1-13
ISO25-ER25MS-35	35	35	2-16

ER Collet Chuck without Drive Slots

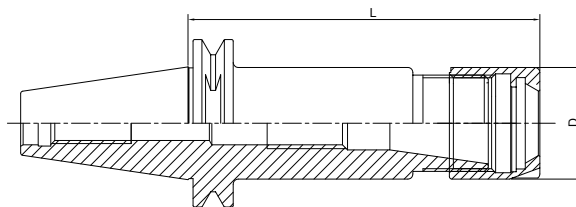
ER 弹簧夹头刀柄



DIN6499


 ≤ 0.003

 RPM
G2.5/25000


AD

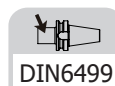


Size	D	L	Capacity
ISO25-ER25-35	42	35	2-16
ISO30-ER25-50	42	50	2-16
ISO30-ER32-50	50	50	2-20
ISO30-ER40-60	63	60	3-26

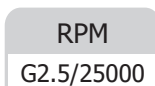
ISO

ER Collet Chuck without Drive Slots

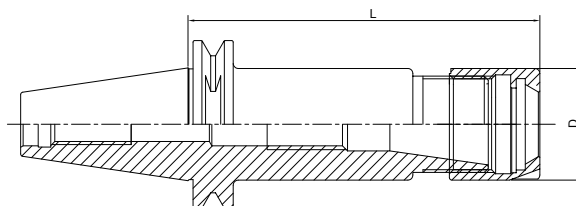
ER 弹簧夹头刀柄



DIN6499


 ≤ 0.003

 RPM
G2.5/25000


AD



Size	D	L	Capacity
ISO10-ER11M-25	16	25	1-7
ISO20-ER20M-35	28	35	1-13
ISO25-ER20M-35	28	35	1-13
ISO30-ER25M-50	35	50	2-16