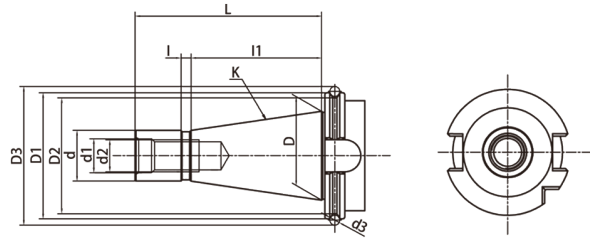
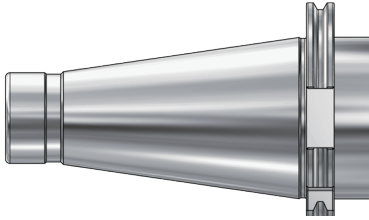


# **GOST**

## **TOOL HOLDERS**

---

## GOST Taper Standard GOST 锥柄标准



| Size | D     | D1  | D2 | D3      | D4 | d    | d1 | d2  | d3 | L     | l | l1    |
|------|-------|-----|----|---------|----|------|----|-----|----|-------|---|-------|
| SK30 | 31.75 | 50  | 46 | 55.070  | 44 | 17.4 | 13 | M12 | 4  | 68.4  | 3 | 48.4  |
| SK40 | 44.45 | 63  | 58 | 69.340  | 55 | 25.3 | 17 | M16 | 5  | 93.4  | 5 | 65.4  |
| SK50 | 69.85 | 100 | 94 | 107.610 | 85 | 39.6 | 25 | M24 | 6  | 126.8 | 8 | 101.8 |

**Taper standard:** GOST 25827-93

**Material:** Alloyed case hardened steel

**Surface Treatment:** Blackening

**Taper tolerance:** <AT3

**Hardness:** HRC 56-60

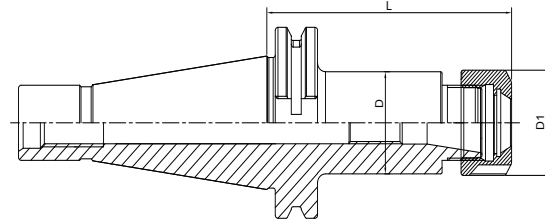
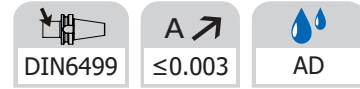
**Carbon depth:** 0.8±0.2mm

**Surface Roughness:** Ra<0.2µm

## GOST TOOLING SYSTEM GOST 工具系统

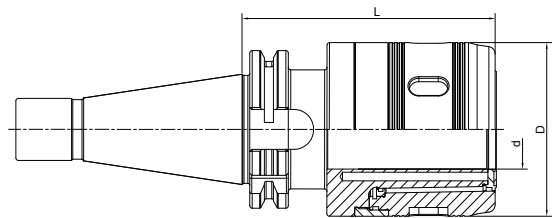
|                                 |      |
|---------------------------------|------|
| ER Collet Chuck .....           | H.04 |
| ER弹簧夹头刀柄 .....                  | H.04 |
| Power Milling Chuck.....        | H.05 |
| 强力铣刀柄.....                      | H.05 |
| Face Mill Holder .....          | H.05 |
| 面铣刀柄 .....                      | H.05 |
| Combi Shell Mill Holder .....   | H.06 |
| 混合插入式铣刀柄.....                   | H.06 |
| End Mill Holder.....            | H.07 |
| 侧固刀柄.....                       | H.07 |
| Morse Taper Adapter.....        | H.08 |
| 带扁尾莫氏刀柄.....                    | H.08 |
| Morse Taper Adapter.....        | H.08 |
| 带螺纹孔莫氏刀柄.....                   | H.08 |
| APU Drill Chuck Holder .....    | H.09 |
| APU钻夹头刀柄.....                   | H.09 |
| Quick Change Tapping Chuck..... | H.09 |
| 弹性快换攻丝刀柄.....                   | H.09 |



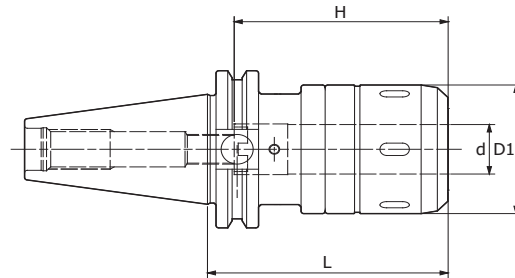
**ER Collet Chuck**  
**ER 弹簧夹头刀柄**


| Size                | D  | D1 | L   | Capacity |
|---------------------|----|----|-----|----------|
| SK40-ER16-70 GOST   | 28 | 32 | 70  | 1-10     |
| SK40-ER25-70 GOST   | 42 | 42 | 70  | 2-16     |
| SK40-ER32-70 GOST   | 40 | 50 | 70  | 2-20     |
| SK40-ER40-80 GOST   | 50 | 63 | 80  | 3-26     |
| SK40-ER16-100 GOST  | 28 | 32 | 100 | 1-10     |
| SK40-ER25-100 GOST  | 42 | 42 | 100 | 2-16     |
| SK40-ER32-100 GOST  | 40 | 50 | 100 | 2-20     |
| SK40-ER40-100 GOST  | 50 | 63 | 100 | 3-26     |
| SK40-ER16-160T GOST | 28 | 32 | 160 | 1-10     |
| SK40-ER25-160 GOST  | 42 | 42 | 160 | 2-16     |
| SK40-ER32-160 GOST  | 40 | 50 | 160 | 2-20     |
| SK40-ER40-160 GOST  | 50 | 63 | 160 | 3-26     |
|                     |    |    |     |          |
| SK50-ER16-80 GOST   | 28 | 32 | 80  | 1-10     |
| SK50-ER25-80 GOST   | 42 | 42 | 80  | 2-16     |
| SK50-ER32-70 GOST   | 50 | 50 | 70  | 2-20     |
| SK50-ER40-80 GOST   | 63 | 63 | 80  | 3-26     |
| SK50-ER16-100 GOST  | 28 | 32 | 100 | 1-10     |
| SK50-ER25-100 GOST  | 42 | 42 | 100 | 2-16     |
| SK50-ER32-100 GOST  | 50 | 50 | 100 | 2-20     |
| SK50-ER40-100 GOST  | 63 | 63 | 100 | 3-26     |
| SK50-ER16-160 GOST  | 28 | 32 | 160 | 1-10     |
| SK50-ER25-160 GOST  | 42 | 42 | 160 | 2-16     |
| SK50-ER32-160 GOST  | 50 | 50 | 160 | 2-20     |
| SK50-ER40-160 GOST  | 63 | 63 | 160 | 3-26     |

**Power Milling Chuck**  
**强力铣刀柄**



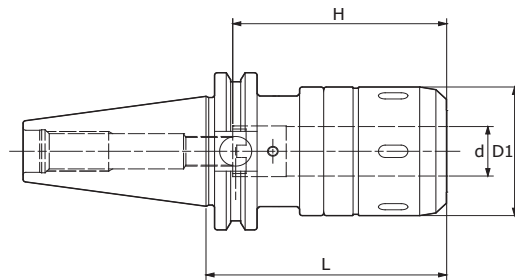
| Size               | d  | D  | L   | Capacity |
|--------------------|----|----|-----|----------|
| SK40-HC20-85 GOST  | 20 | 50 | 85  | 3-16; 20 |
| SK40-HC25-100 GOST | 25 | 59 | 100 | 3-20; 25 |
| SK40-HC32-105 GOST | 32 | 72 | 105 | 3-25; 32 |
| SK50-HC20-105 GOST | 20 | 50 | 105 | 3-16; 20 |
| SK50-HC25-105 GOST | 25 | 59 | 105 | 3-20; 25 |
| SK50-HC32-110 GOST | 32 | 72 | 110 | 3-25; 32 |
| SK50-HC42-110 GOST | 42 | 99 | 110 | 3-32; 42 |

**Power Milling Chuck**
**强力铣刀柄**
**A ↗**  
 $\leq 0.008$ 
  
**AD**


| Size                 | d  | D1 | L   | H   | Remark |
|----------------------|----|----|-----|-----|--------|
| SK30-CT16SA-90 GOST  | 16 | 45 | 90  | 65  |        |
| SK30-CT16SA-105 GOST | 16 | 45 | 105 | 65  |        |
| SK30-CT20SA-90 GOST  | 20 | 52 | 90  | 80  |        |
| SK30-CT20SA-105 GOST | 20 | 52 | 105 | 80  |        |
| SK40-CT16SA-90 GOST  | 16 | 45 | 90  | 65  |        |
| SK40-CT20SA-75 GOST  | 20 | 52 | 75  | 80  | 4      |
| SK40-CT20SA-90 GOST  | 20 | 52 | 90  | 80  |        |
| SK40-CT20SA-105 GOST | 20 | 52 | 105 | 80  | 4      |
| SK40-CT20SA-120 GOST | 20 | 52 | 120 | 80  |        |
| SK40-CT25SA-105 GOST | 25 | 61 | 105 | 80  | 2      |
| SK40-CT25SA-135 GOST | 25 | 61 | 135 | 80  |        |
| SK40-CT32SA-105 GOST | 32 | 73 | 105 | 85  | 1,2    |
| SK40-CT32SA-120 GOST | 32 | 73 | 120 | 85  | 1      |
| SK40-CT32SA-135 GOST | 32 | 73 | 135 | 120 |        |

- Hex-head screws M4x5 are necessary to plug air hole for center through coolant feed. (included in delivery)
- 1 MC-A Collets cannot be used.
- 2 Form B Standard
- 4 Without undercut (DIN 69871) before fl ange
- 4 Not suitable for certain M/C

**Power Milling Chuck**  
**强力铣刀柄**



| Size                  | d  | D1 | L   | H   | Remark |
|-----------------------|----|----|-----|-----|--------|
| SK50-CT16SA-90 GOST   | 16 | 45 | 90  | 65  |        |
| SK50-CT16SA-105 GOST  | 16 | 45 | 105 | 65  | 1      |
| SK50-CT16SA-135 GOST  | 16 | 45 | 135 | 65  |        |
| SK50-CT20SA-90 GOST   | 20 | 52 | 90  | 80  |        |
| SK50-CT20SA-105 GOST  | 20 | 52 | 105 | 80  | 1      |
| SK50-CT20SA-120 GOST  | 20 | 52 | 120 | 80  |        |
| SK50-CT20SA-135 GOST  | 20 | 52 | 135 | 80  |        |
| SK50-CT20SA-165 GOST  | 20 | 52 | 165 | 80  |        |
| SK50-CT20SA-200 GOST  | 20 | 52 | 200 | 80  |        |
| SK50-CT20SA-250 GOST  | 20 | 52 | 250 | 80  |        |
| SK50-CT20SA-300 GOST  | 20 | 52 | 300 | 80  |        |
| SK50-CT25SA-105 GOST  | 25 | 61 | 105 | 80  | 1      |
| SK50-CT25SA-135 GOST  | 25 | 61 | 135 | 80  |        |
| SK50-CT25SA-165 GOST  | 25 | 61 | 165 | 80  |        |
| SK50-CT25SA-200 GOST  | 25 | 61 | 200 | 80  |        |
| SK50-CT25SA-250 GOST  | 25 | 61 | 250 | 80  |        |
| SK50-CT25SA-300 GOST  | 25 | 61 | 300 | 80  |        |
| SK50-CT32SA-95 GOST   | 32 | 73 | 95  | 120 |        |
| SK50-CT32SA -105 GOST | 32 | 73 | 105 | 120 | 1      |
| SK50-CT32SA-120 GOST  | 32 | 73 | 120 | 120 |        |
| SK50-CT32SA-135 GOST  | 32 | 73 | 135 | 120 |        |
| SK50-CT32SA-150 GOST  | 32 | 73 | 150 | 120 |        |
| SK50-CT32SA-165 GOST  | 32 | 73 | 165 | 120 |        |
| SK50-CT32SA-200 GOST  | 32 | 73 | 200 | 120 |        |
| SK50-CT32SA-250 GOST  | 32 | 73 | 250 | 120 |        |
| SK50-CT32SA-300 GOST  | 32 | 73 | 300 | 120 |        |




- Hex-head screws M4x5 are necessary to plug air hole for center through coolant feed. (included in delivery)
- 1 MC-A Collets cannot be used.
- 2 Form B Standard
- 4 Without undercut (DIN 69871) before fl ange
- 4 Not suitable for certain M/C

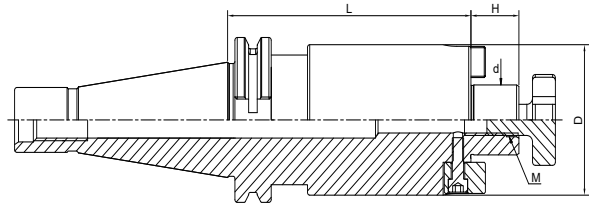
GOST





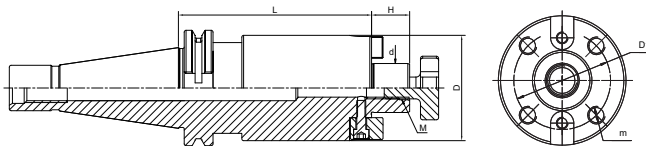
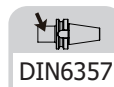
**Face Mill Holder**  
面铣刀柄

|   |  |  |
|---|--|--|
|  DIN6357 |  A ↗ ≤0.005 |  AD |
|---|--|--|



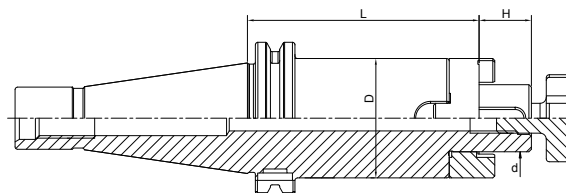
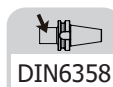
| Size               | d  | D  | L  | H  | M   |
|--------------------|----|----|----|----|-----|
| SK40-FMB16-45 GOST | 16 | 38 | 45 | 17 | M8  |
| SK40-FMB22-45 GOST | 22 | 48 | 45 | 19 | M10 |
| SK40-FMB27-40 GOST | 27 | 58 | 40 | 21 | M12 |
| SK40-FMB32-55 GOST | 32 | 78 | 55 | 24 | M16 |
| SK50-FMB16-40 GOST | 16 | 38 | 40 | 17 | M8  |
| SK50-FMB22-45 GOST | 22 | 48 | 45 | 19 | M10 |
| SK50-FMB27-45 GOST | 27 | 58 | 45 | 21 | M12 |
| SK50-FMB32-50 GOST | 32 | 78 | 50 | 24 | M16 |

## Face Mill Holder 面铣刀柄



| Size               | d  | D  | D1   | L  | H  | M   | m   |
|--------------------|----|----|------|----|----|-----|-----|
| SK40-FMB40-55 GOST | 40 | 88 | 66.7 | 55 | 27 | M20 | M12 |
| SK50-FMB40-55 GOST | 40 | 88 | 66.7 | 55 | 27 | M20 | M12 |

## Combi Shell Mill Holder 混合插入式铣刀柄

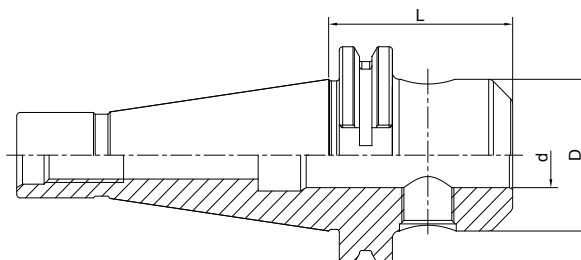


| Size                | d  | D  | H  | L  |
|---------------------|----|----|----|----|
| SK40-SEMC16-55 GOST | 16 | 32 | 17 | 55 |
| SK40-SEMC22-55 GOST | 22 | 40 | 19 | 55 |
| SK40-SEMC27-55 GOST | 27 | 48 | 21 | 55 |
| SK40-SEMC32-60 GOST | 32 | 58 | 24 | 60 |
| SK40-SEMC40-60 GOST | 40 | 70 | 27 | 60 |
| SK50-SEMC16-55 GOST | 16 | 32 | 17 | 55 |
| SK50-SEMC22-55 GOST | 22 | 40 | 19 | 55 |
| SK50-SEMC27-55 GOST | 27 | 48 | 21 | 55 |
| SK50-SEMC32-55 GOST | 32 | 58 | 24 | 55 |
| SK50-SEMC40-55 GOST | 40 | 70 | 27 | 55 |

**End Mill Holder Weldon**  
侧固刀柄

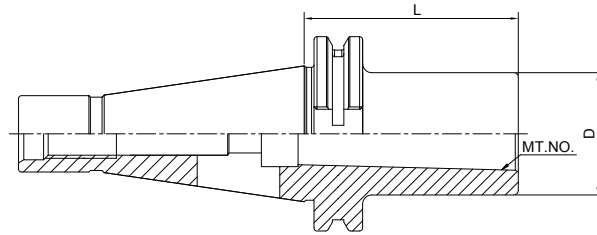
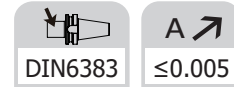


|               |            |    |
|---------------|------------|----|
| DIN6359/1835B | A ↗ ≤0.005 | AD |
|---------------|------------|----|



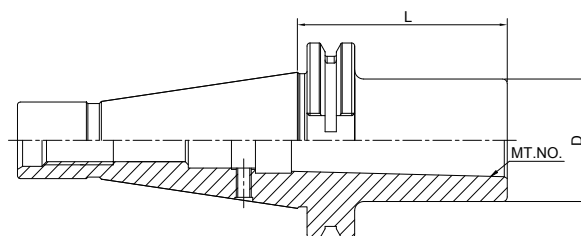
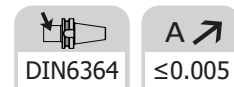
| Size                | d  | D  | L   | M     | Screw Quantity |
|---------------------|----|----|-----|-------|----------------|
| SK40-SLA6-50 GOST   | 6  | 25 | 50  | M6    | 1              |
| SK40-SLA8-50 GOST   | 8  | 28 | 50  | M8    | 1              |
| SK40-SLA10-50 GOST  | 10 | 35 | 50  | M10   | 1              |
| SK40-SLA12-50 GOST  | 12 | 42 | 50  | M12   | 1              |
| SK40-SLA14-50 GOST  | 14 | 44 | 50  | M12   | 1              |
| SK40-SLA16-63 GOST  | 16 | 48 | 63  | M14   | 1              |
| SK40-SLA18-63 GOST  | 18 | 50 | 63  | M14   | 1              |
| SK40-SLA20-63 GOST  | 20 | 52 | 63  | M16   | 1              |
| SK40-SLA25-100 GOST | 25 | 65 | 100 | M18*2 | 2              |
| SK40-SLA32-100 GOST | 32 | 72 | 100 | M20*2 | 2              |
| SK40-SLA40-120 GOST | 40 | 80 | 120 | M20*2 | 2              |
| SK50-SLA6-63 GOST   | 6  | 25 | 63  | M6    | 1              |
| SK50-SLA8-63 GOST   | 8  | 28 | 63  | M8    | 1              |
| SK50-SLA10-63 GOST  | 10 | 35 | 63  | M10   | 1              |
| SK50-SLA12-63 GOST  | 12 | 42 | 63  | M12   | 1              |
| SK50-SLA14-63 GOST  | 14 | 44 | 63  | M12   | 1              |
| SK50-SLA16-63 GOST  | 16 | 48 | 63  | M14   | 1              |
| SK50-SLA18-63 GOST  | 18 | 50 | 63  | M14   | 1              |
| SK50-SLA20-63 GOST  | 20 | 52 | 63  | M16   | 1              |
| SK50-SLA25-80 GOST  | 25 | 65 | 80  | M18*2 | 2              |
| SK50-SLA32-100 GOST | 32 | 72 | 100 | M20*2 | 2              |
| SK50-SLA40-100 GOST | 40 | 80 | 100 | M20*2 | 2              |

## Morse Taper Adapter with Tang 带扁尾莫氏刀柄



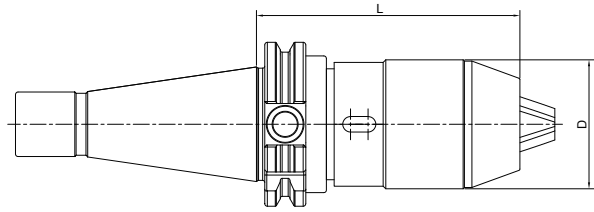
| Size               | MT. NO. | D  | L   |
|--------------------|---------|----|-----|
| SK40-MTA1-50 GOST  | 1       | 25 | 50  |
| SK40-MTA2-50 GOST  | 2       | 32 | 50  |
| SK40-MTA3-70 GOST  | 3       | 40 | 70  |
| SK40-MTA4-95 GOST  | 4       | 48 | 95  |
|                    |         |    |     |
| SK50-MTA1-45 GOST  | 1       | 25 | 45  |
| SK50-MTA2-60 GOST  | 2       | 32 | 60  |
| SK50-MTA3-65 GOST  | 3       | 40 | 65  |
| SK50-MTA4-95 GOST  | 4       | 48 | 95  |
| SK50-MTA5-105 GOST | 5       | 63 | 105 |

## Morse Taper Adapter with Drawbar 带螺纹孔莫氏刀柄



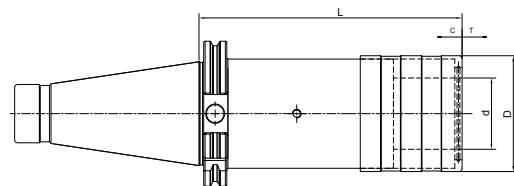
| Size               | MT. NO. | D  | L   |
|--------------------|---------|----|-----|
| SK40-MTB1-50 GOST  | 1       | 25 | 50  |
| SK40-MTB2-50 GOST  | 2       | 32 | 50  |
| SK40-MTB3-70 GOST  | 3       | 40 | 70  |
| SK40-MTB4-95 GOST  | 4       | 48 | 95  |
|                    |         |    |     |
| SK50-MTB1-45 GOST  | 1       | 25 | 45  |
| SK50-MTB2-60 GOST  | 2       | 32 | 60  |
| SK50-MTB3-65 GOST  | 3       | 40 | 65  |
| SK50-MTB4-95 GOST  | 4       | 48 | 95  |
| SK50-MTB5-105 GOST | 5       | 63 | 105 |

**APU Drill Chuck Holder**  
**APU 钻夹头刀柄**



| Size                | D  | L   | Capacity |
|---------------------|----|-----|----------|
| SK40-APU13-100 GOST | 48 | 100 | 1-13     |
| SK40-APU16-110 GOST | 53 | 110 | 3-16     |
| SK50-APU13-100 GOST | 48 | 100 | 1-13     |
| SK50-APU16-100 GOST | 53 | 100 | 3-16     |

**Quick Change Tapping Chuck with Length Compensation**  
**弹性快换攻丝刀柄**



| Size                 | D  | d  | L   | T    | C    |
|----------------------|----|----|-----|------|------|
| SK40-TC312-59 GOST   | 36 | 19 | 59  | 7.5  | 7.5  |
| SK40-TC820-97 GOST   | 54 | 31 | 97  | 12.5 | 12.5 |
| SK40-TC1433-156 GOST | 78 | 48 | 156 | 22   | 22   |
| SK50-TC312-63 GOST   | 38 | 19 | 63  | 7.5  | 7.5  |
| SK50-TC820-97 GOST   | 54 | 31 | 97  | 12.5 | 12.5 |
| SK50-TC1433-140 GOST | 78 | 48 | 140 | 22   | 22   |

**GOST**