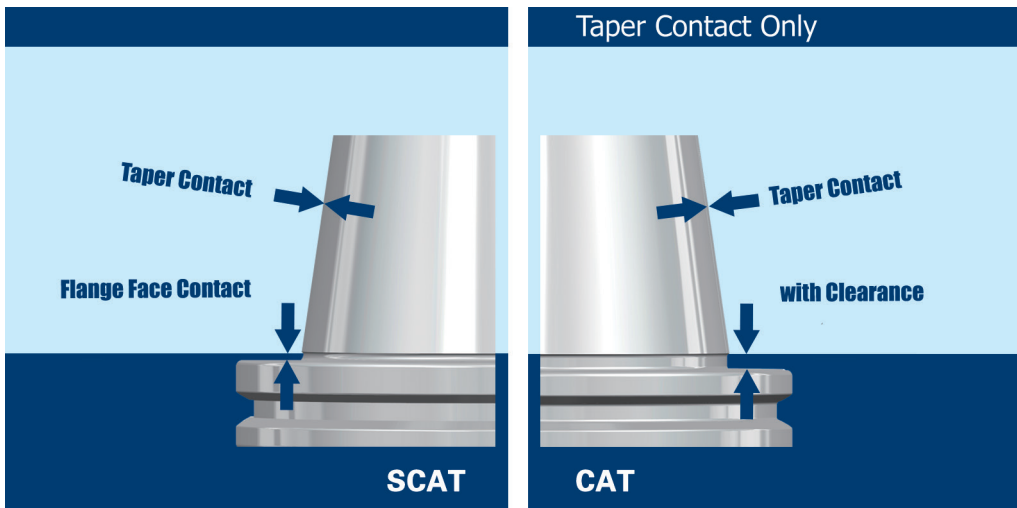


TOOL HOLDERS

SCAT

SCAT DualDrive (Double Contact) Tool Holders



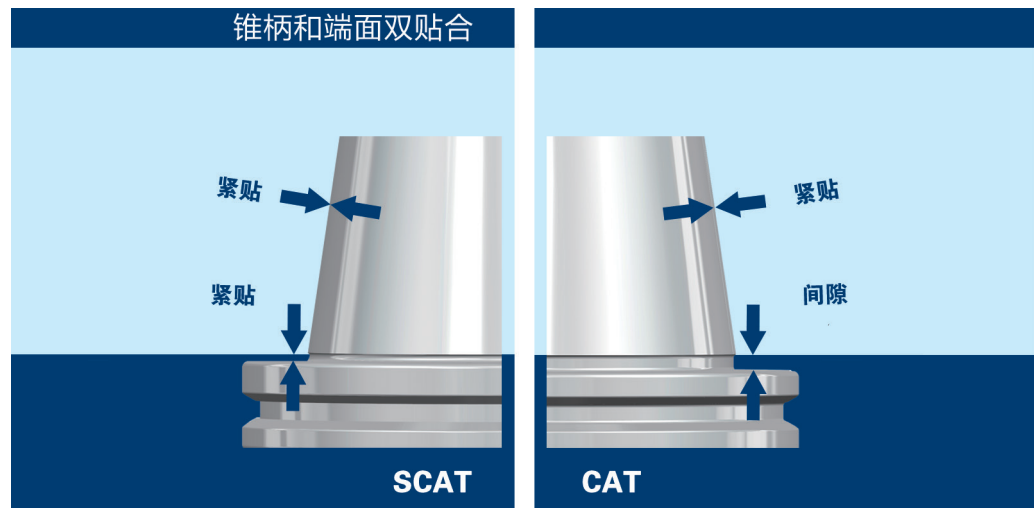
Taper and Flange Face Dual Contact System Advantages:

- * Improve tool holder stability when high speed working.
- * Improve workpiece surface finish.
- * Improve working dimension accuracy.
- * Improve ATC repeatability.
- * Improve the roundness when boring operation.
- * Extend cutting tool life.

ORDER SPECIFICATION:

PLEASE ORDER SCAT SPINDLE MACHINING CENTERS FOR BETTER PERFORMANCE.

SCAT 双接触刀柄



SCAT

使用 SCAT 双接触刀柄优势：

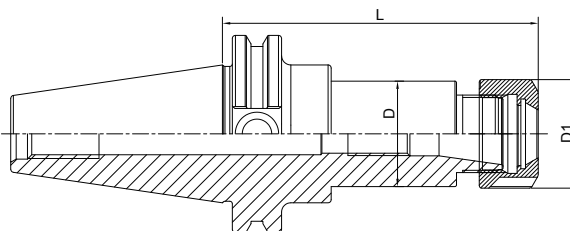
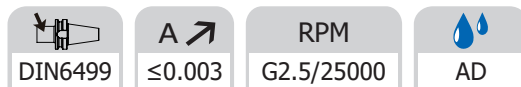
- * 高速加工时提高刀柄稳定性；
- * 提高工件表面光洁度；
- * 提高加工精度；
- * 提高 ATC 的重复精度；
- * 提高镗孔加工圆度；
- * 增加刀具使用寿命。

订购说明：

为了更好的使用效果，请订购带 SCAT 主轴的加工中心。

ER Collet Chuck with UM Nut

ER 弹簧夹头刀柄

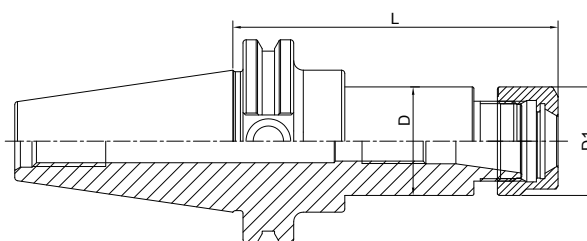
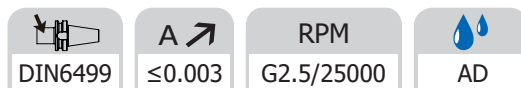


| Size | D | D1 | L | Capacity |
|--------------------|-------|----|------|----------|
| SCAT40-ER16UM-2.5" | 44.45 | 32 | 2.5" | 1-10 |
| SCAT40-ER20UM-2.5" | 34 | 35 | 2.5" | 1-13 |
| SCAT40-ER25-2.5" | 42 | 42 | 2.5" | 2-16 |
| SCAT40-ER32-2.5" | 44.45 | 50 | 2.5" | 2-20 |
| SCAT40-ER40-3" | 50 | 63 | 3" | 3-26 |
| SCAT40-ER16UM-4" | 28 | 32 | 4" | 1-10 |
| SCAT40-ER20UM-4" | 34 | 35 | 4" | 1-13 |
| SCAT40-ER25-4" | 42 | 42 | 4" | 2-16 |
| SCAT40-ER32-4" | 44.45 | 50 | 4" | 2-20 |
| SCAT40-ER40-4" | 50 | 63 | 4" | 3-26 |

SCAT

ER Collet Chuck with Hex Nut

ER 弹簧夹头刀柄



| Size | D | D1 | L | Capacity |
|------------------|-------|----|------|----------|
| SCAT40-ER11-2.5" | 19 | 19 | 2.5" | 1-7 |
| SCAT40-ER16-2.5 | 44.45 | 28 | 2.5" | 1-10 |
| SCAT40-ER20-2.5 | 34 | 34 | 2.5" | 1-13 |
| SCAT40-ER11-4" | 19 | 19 | 4" | 1-7 |
| SCAT40-ER16-4" | 28 | 28 | 4" | 1-10 |
| SCAT40-ER20-4" | 34 | 34 | 4" | 1-13 |