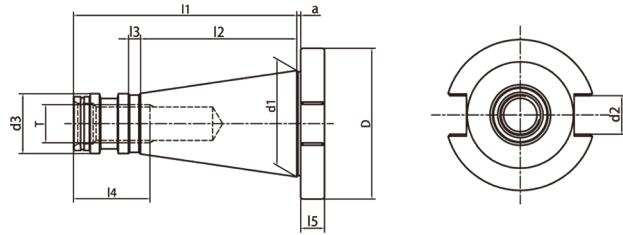
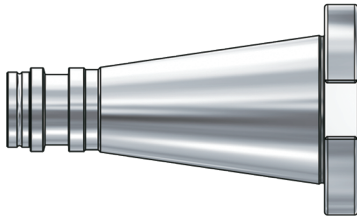


NT

TOOL HOLDERS

NT Taper Standard

NT 锥柄标准



Size	D	d1	d2	d3	a	l1	l2	l3	l4	l5	T
NT30	50	31.75	16.1	17.11	1.6	68.4	48.4	3	24	8	M12
NT40 OTT	63	44.45	16.1	25	1.6	93.4	65.4	5	32	10	M16
NT50 OTT	97.5	69.85	25.7	39.29	3.2	126.8	101.8	8	47	12	M24

Taper standard: DIN 2080

Material: Alloyed case hardened steel

Surface Treatment: Blackening and Bright

Taper tolerance: <AT3

Hardness: HRC 56-60

Carbon depth: 0.8±0.2mm

Surface Roughness: Ra<0.2µm

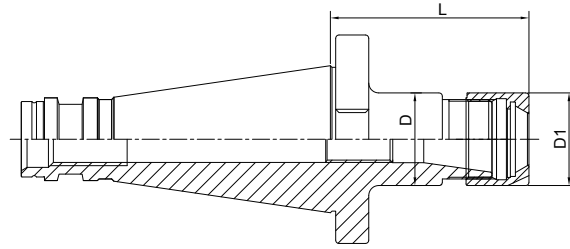
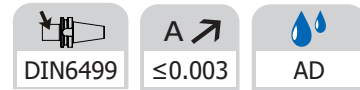
NT TOOLING SYSTEM

NT 工具系统

ER Collet Chuck.....	G.04
ER弹簧夹头刀柄	G.04
Power Milling Chuck.....	G.05
强力铣刀柄	G.05
OZ Collet Chuck.....	G.05
OZ夹头刀柄	G.05
Face Mill Holder	G.06
面铣刀柄	G.06
Combi Shell Mill Holder.....	G.07
混合插入式铣刀柄	G.07
End Mill Holder.....	G.08
侧固刀柄	G.08
Morse Taper Adapter.....	G.09
带扁尾莫氏刀柄	G.09
Morse Taper Adapter	G.10
带螺纹孔莫氏刀柄	G.10
Tool Holder Adatper Sleeve	G.10
转换刀柄.....	G.10
Drill Chuck Adapter.....	G.11
钻接杆	G.11
APU Drill Chuck Holder	G.11
APU钻夹头刀柄.....	G.11
Quick Change Tapping Chuck	G.12
弹性快换攻丝刀柄	G.12

**NT**

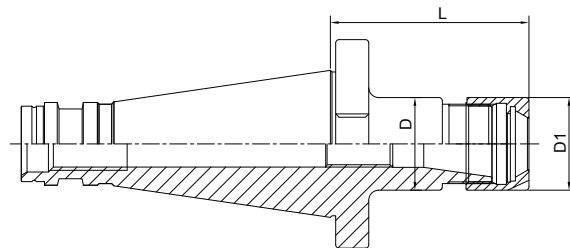
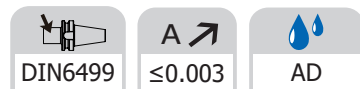
ER Collet Chuck ER 弹簧夹头刀柄



Size	D	D1	L	Capacity
NT30-ER16-50	28	28	50	1-10
NT30-ER20-50	34	34	50	1-13
NT30-ER25-50	42	42	50	2-16
NT30-ER32-50	40	50	50	2-20
NT30-ER40-80	50	63	80	4-26
NT40-ER16-50 OTT	28	28	50	1-10
NT40-ER20-50 OTT	34	34	50	1-13
NT40-ER25-50 OTT	42	42	50	1-13
NT40-ER32-50 OTT	50	50	50	3-20
NT40-ER40-80 OTT	50	63	80	4-26
NT50-ER25-60 OTT	42	42	60	1-13
NT50-ER32-70 OTT	50	50	70	1-20
NT50-ER40-80 OTT	63	63	70	2-26
NT50-ER50-90 OTT	70	78	90	6-34

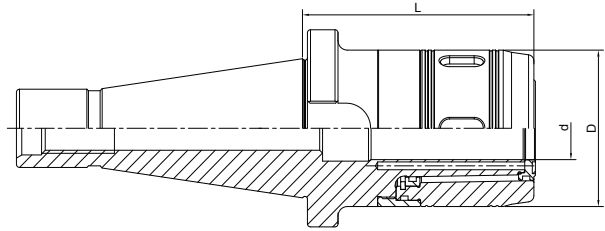
NT

ER Collet Chuck with Mini Nut ER 弹簧夹头刀柄



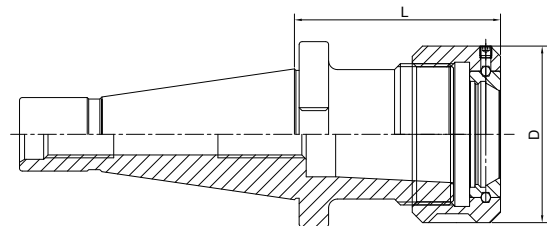
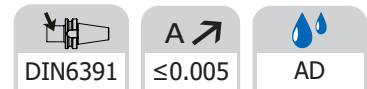
Size	D	D1	L	Capacity
NT30-ER16M-70	22	22	70	1-10
NT30-ER20M-70	28	28	70	1-13
NT30-ER25M-70	35	35	70	2-16
NT40-ER16M-60 OTT	22	22	60	1-10
NT40-ER20M-60 OTT	28	28	60	1-13
NT40-ER25M-60 OTT	35	35	60	2-16

Power Milling Chuck
强力铣刀柄



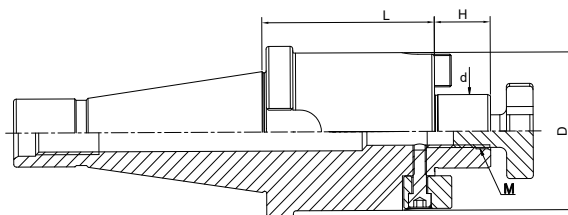
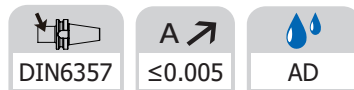
Size	d	D	L	Capacity	M
NT40-HC25-105 OTT	25	59	105	3-20; 25	M16
NT40-HC32-105 OTT	32	72	105	3-25; 32	M16
NT50-HC32-110 OTT	32	72	110	3-25; 32	M24
NT50-HC42-120 OTT	42	99	120	3-32; 42	M24

OZ Collet Chuck
OZ 夹头刀柄



Size	D	L	Capacity
NT30-OZ16-50	43	50	2-16
NT30-OZ25-70	60	70	3-25
NT40-OZ16-70 OTT	43	70	2-16
NT40-OZ25-70 OTT	60	70	3-25
NT40-OZ32-80 OTT	72	80	6-32
NT50-OZ25-70 OTT	60	70	3-25
NT50-OZ32-80 OTT	72	80	6-32

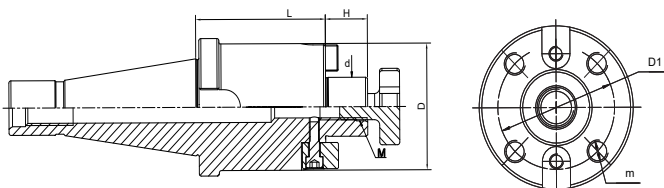
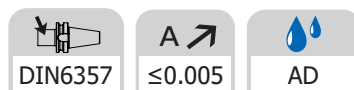
Face Mill Holder 面铣刀柄



Size	d	D	L	H	M
NT30-FMB16-30	16	38	30	17	M8
NT30-FMB22-30	22	48	30	19	M10
NT30-FMB27-45	27	58	45	21	M12
NT30-FMB32-50	32	78	50	24	M16
NT40-FMB16-30 OTT	16	38	30	17	M8
NT40-FMB22-30 OTT	22	48	30	19	M10
NT40-FMB27-30 OTT	27	58	30	21	M12
NT40-FMB32-30 OTT	32	78	30	24	M16
NT50-FMB16-30 OTT	16	38	30	17	M8
NT50-FMB22-35 OTT	22	48	35	19	M10
NT50-FMB27-35 OTT	27	58	35	21	M12
NT50-FMB32-40 OTT	32	78	40	24	M16

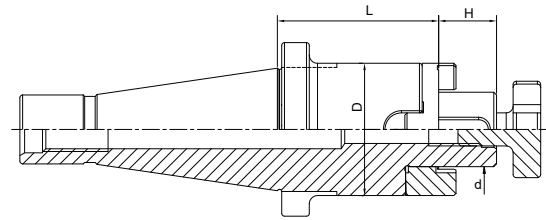
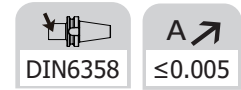
NT

Face Mill Holder 面铣刀柄



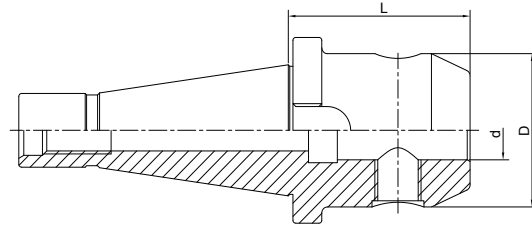
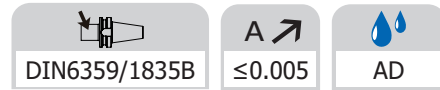
Size	d	D	D1	L	H	M	m
NT40-FMB40-30 OTT	40	88	66.7	30	27	M20	M12
NT50-FMB40-40 OTT	40	88	66.7	40	27	M20	M12

Combi Shell Mill Holder
混合插入式铣刀柄



Size	d	D	L	L1
NT30-SEMC16-35	16	32	35	17
NT30-SEMC22-35	22	40	35	19
NT30-SEMC27-35	27	48	35	21
NT30-SEMC32-50	32	58	50	24
NT40-SEMC16-52 OTT	16	32	52	17
NT40-SEMC22-52 OTT	22	40	52	19
NT40-SEMC27-52 OTT	27	48	52	21
NT40-SEMC32-52 OTT	32	58	52	24
NT40-SEMC40-52 OTT	40	70	52	27
NT50-SEMC16-55 OTT	16	32	55	17
NT50-SEMC22-55 OTT	22	40	55	19
NT50-SEMC27-55 OTT	27	48	55	21
NT50-SEMC32-55 OTT	32	58	55	24
NT50-SEMC40-55 OTT	40	70	55	27

End Mill Holder Weldon 侧固刀柄

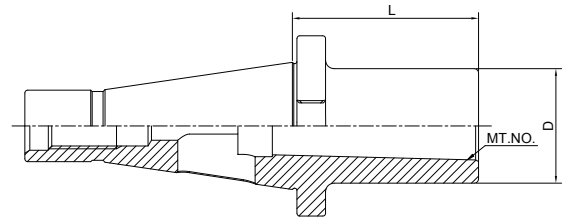
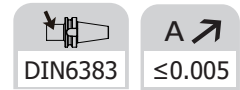


Size	d	D	L	M	Screw Quantity
NT30-SLA06-40	6	25	40	M6	1
NT30-SLA08-40	8	28	40	M8	1
NT30-SLA10-40	10	35	40	M10	1
NT30-SLA12-40	12	42	40	M12	1
NT30-SLA16-50	16	48	50	M14	1
NT30-SLA18-50	18	50	50	M14	1
NT30-SLA20-63	20	52	63	M16	1

NT40-SLA06-50 OTT	6	25	50	M6	1
NT40-SLA08-50 OTT	8	28	50	M8	1
NT40-SLA10-50 OTT	10	35	50	M10	1
NT40-SLA12-50 OTT	12	42	50	M12	1
NT40-SLA14-50 OTT	14	44	50	M12	1
NT40-SLA16-63 OTT	16	48	63	M14	1
NT40-SLA18-63 OTT	18	50	63	M14	1
NT40-SLA20-63 OTT	20	52	63	M16	1
NT40-SLA25-80 OTT	25	65	80	M18*2	2
NT40-SLA32-80 OTT	32	72	80	M20*2	2
NT40-SLA40-90 OTT	40	80	90	M20*2	2

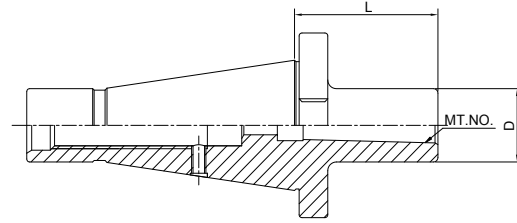
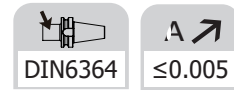
NT50-SLA06-63 OTT	6	25	63	M6	1
NT50-SLA08-63 OTT	8	28	63	M8	1
NT50-SLA10-63 OTT	10	35	63	M10	1
NT50-SLA12-63 OTT	12	42	63	M12	1
NT50-SLA14-63 OTT	14	44	63	M12	1
NT50-SLA16-63 OTT	16	48	63	M14	1
NT50-SLA18-63 OTT	18	50	63	M14	1
NT50-SLA20-63 OTT	20	52	63	M16	1
NT50-SLA25-80 OTT	25	65	80	M18*2	2
NT50-SLA32-80 OTT	32	72	80	M20*2	2
NT50-SLA40-90 OTT	40	80	90	M20*2	2

Morse Taper Adapter with Tang
带扁尾莫氏刀柄



Size	MT.No.	L	D
NT30-MTA1-50	1	50	25
NT30-MTA2-50	2	50	32
NT30-MTA3-75	3	75	40
NT40-MTA1-50 OTT	1	50	25
NT40-MTA2-50 OTT	2	50	32
NT40-MTA3-65 OTT	3	65	40
NT40-MTA4-95 OTT	4	95	48
NT50-MTA1-45 OTT	1	45	25
NT50-MTA2-60 OTT	2	60	32
NT50-MTA3-65 OTT	3	65	40
NT50-MTA4-70 OTT	4	70	48
NT50-MTA5-105 OTT	5	105	63

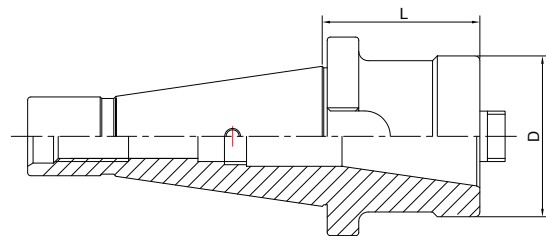
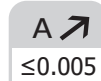
Morse Taper Adapter with Drawbar 带螺纹孔莫氏刀柄



Size	MT.No.	L	D
NT30-MTB1-45	1	45	25
NT30-MTB2-60	2	60	32
NT30-MTB3-70	3	70	40
NT40-MTB1-50 OTT	1	50	25
NT40-MTB2-50 OTT	2	50	32
NT40-MTB3-65 OTT	3	65	40
NT40-MTB4-95 OTT	4	95	48
NT50-MTB1-60 OTT	1	60	25
NT50-MTB2-60 OTT	2	60	32
NT50-MTB3-65 OTT	3	65	40
NT50-MTB4-65 OTT	4	65	48
NT50-MTB5-120 OTT	5	120	63

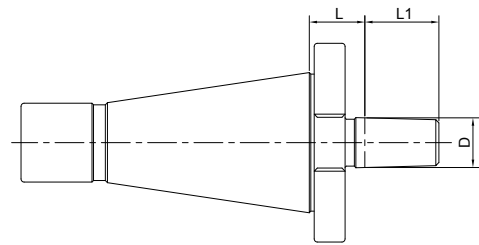
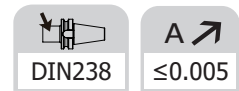
NT

Tool Holder Adapter Sleeve 转换刀柄



Size	D	L
NT40-NT30-50 OTT	51	50
NT40-NT40-100 OTT	63	100
NT50-NT40-50 OTT	70	50
NT50-NT50-125 OTT	97	125

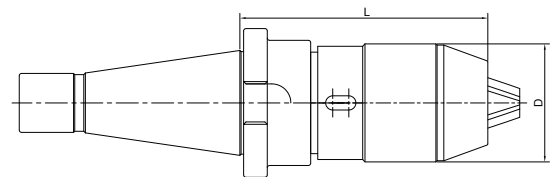
Drill Chuck Adapter
钻接杆



Size	D	L	L1
NT30-B12	B12	15	18.5
NT30-B16	B16	17	24
NT40-B12 OTT	B12	18	18.5
NT40-B16 OTT	B16	18	24
NT40-B18 OTT	B18	18	32
NT50-B16 OTT	B16	20	24
NT50-B18 OTT	B18	20	32

NT

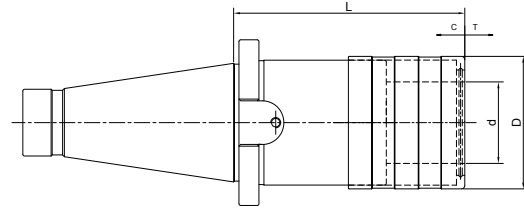
APU Drill Chuck Holder
APU 钻夹头刀柄



Size	D	L	Capacity
NT30-APU08-80	38	80	1-8
NT30-APU13-100	48	100	1-13
NT40-APU08-85 OTT	38	85	1-8
NT40-APU13-110 OTT	48	110	1-13
NT40-APU16-105 OTT	53	105	3-16
NT50-APU08-95 OTT	38	90	1-8
NT50-APU13-100 OTT	48	100	1-13
NT50-APU16-110 OTT	53	110	3-16

Quick Change Tapping Chuck with Length Compensation

弹性快换攻丝刀柄



Size	d	D	L	T	C
NT30-TC312-55	19	36	55	7.5	7.5
NT30-TC820-86	31	53	86	12.5	12.5
NT40-TC312-55 OTT	19	36	55	7.5	7.5
NT40-TC820-86 OTT	31	53	86	12.5	12.5
NT40-TC1433-132 OTT	48	78	132	22	22
NT50-TC312-62 OTT	19	36	62	7.5	7.5
NT50-TC820-90 OTT	31	53	90	12.5	12.5
NT50-TC1433-117 OTT	48	78	117	22	22