

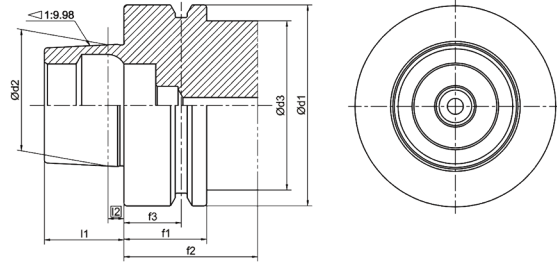
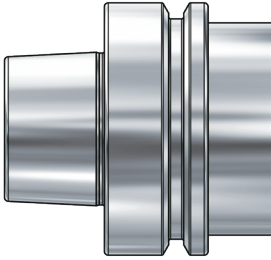
**TOOL HOLDERS**

---

**HSK-F**

## HSK-F Taper Standard

### HSK-F 锥柄标准



Size	d1	d2	d3	l1	l2	f1	f2	f3
HSK50F	50	30.007	42	20	4	26	42	18
HSK63F	63	38.009	53	25	5	26	42	18
HSK80F	80	48.010	68	32	6.3	26	42	18

**HSK**

**Taper standard:** DIN 69893; ISO 12164

**Material:** Alloyed case hardened steel

**Surface Treatment:** Blackening and Bright

**Taper tolerance:** <AT3

**Hardness:** HRC 56-60

**Carbon depth:** 0.8±0.2mm

**Surface Roughness:** Ra<0.2µm

**Balancing:** G6.3/15000; G2.5/25000

## HSK-F TOOLING SYSTEM

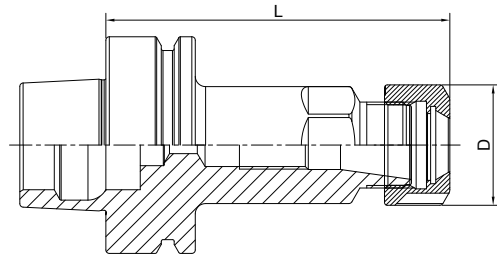
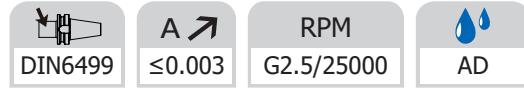
### HSK-F 工具系统目录

ER Collet Chuck.....	F.46
ER 弹簧夹头刀柄.....	F.46
OZ Collet Chuck.....	F.46
OZ 夹头刀柄.....	F.46
Face Mill Holder.....	F.47
面铣刀柄.....	F.47
End Mill Holder.....	F.47
侧固刀柄.....	F.47
Morse Taper Adapter.....	F.48
带扁尾莫氏刀柄.....	F.48
Boring Bar Blank.....	F.48
基础柄.....	F.48
Precision Drill Chuck Holder.....	F.49
精密钻夹头刀柄.....	F.49
Test Arbor.....	F.49
主轴检测棒.....	F.49

**HSK**

### ER Collet Chuck

#### ER 弹簧夹头刀柄

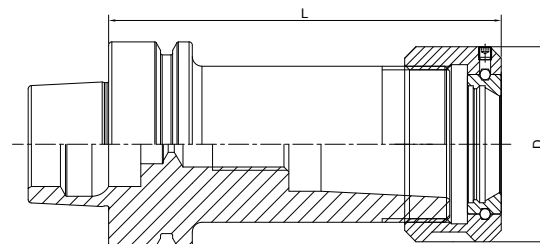


Size	D	L	Capacity
HSK40F-ER16-60	28	60	1-10
HSK40F-ER25-60	42	60	2-16
HSK50F-ER25-70	42	70	2-16
HSK50F-ER32-80	50	80	2-20
HSK50F-ER40-80	63	80	3-26
HSK63F-ER16-60	28	60	1-10
HSK63F-ER25-70	42	70	2-16
HSK63F-ER32-75	50	75	2-20
HSK63F-ER40-80	63	80	3-26
HSK63F-ER16-100	28	100	1-10
HSK63F-ER25-100	42	100	2-16
HSK63F-ER32-100	50	100	2-20
HSK63F-ER40-100	63	100	3-26

**HSK**

### OZ Collet Chuck

#### OZ 夹头刀柄

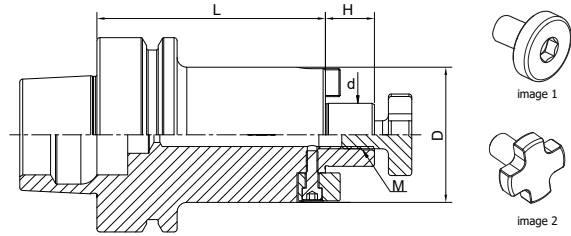


Size	D	L	Capacity
HSK63F-OZ25-90	60	90	3-25

**Face Mill Holder**  
面铣刀柄



DIN6357	A $\leq 0.005$	RPM G2.5/25000	AD
---------	----------------	----------------	----



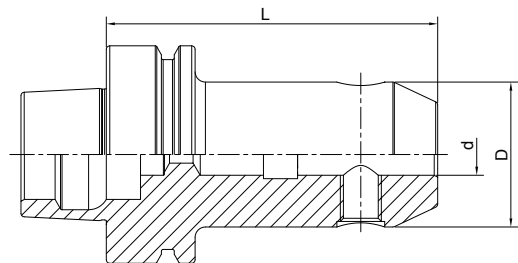
Size	d	D	L	H	M
HSK63F-FMB16-50	16	38	50	17	M8
HSK63F-FMB22-60	22	48	60	19	M10
HSK63F-FMB27-60	27	58	60	21	M12
HSK63F-FMB32-60	32	78	60	24	M16

Face mill holder is with retaining screw (image 2) except China, it is with universal screw (image 1) in China. 中国市场面铣刀柄标配圆头螺钉 (图 1), 其他国家标配十字花螺钉 (图 2).

**End Mill Holder Weldon**  
侧固刀柄



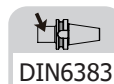
DIN6359/1835B	A $\leq 0.005$	RPM G2.5/25000	AD
---------------	----------------	----------------	----

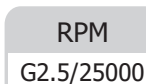
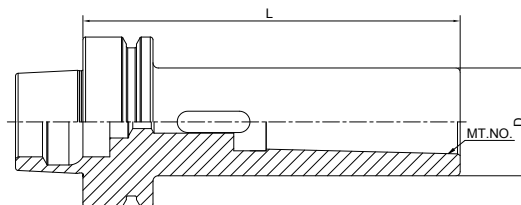


Size	d	D	L	M	Screw Quantity
HSK63F-SLA06-65	6	25	65	M6	1
HSK63F-SLA08-65	8	28	65	M8	1
HSK63F-SLA10-65	10	35	65	M10	1
HSK63F-SLA12-80	12	42	80	M12	1
HSK63F-SLA14-80	14	44	80	M12	1
HSK63F-SLA16-80	16	48	80	M14	1
HSK63F-SLA18-80	18	50	80	M14	1
HSK63F-SLA20-80	20	52	80	M16	1
HSK63F-SLA25-110	25	65	110	M18*2	2
HSK63F-SLA32-110	32	72	110	M20*2	2

## Morse Taper Adapter with Tang

### 带扁尾莫氏刀柄


 DIN6383

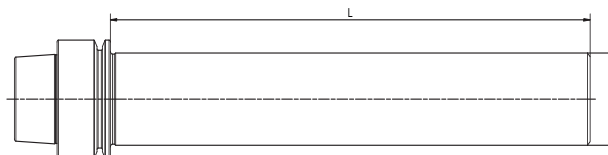

 A  $\leq 0.005$ 

 RPM  
G2.5/25000


Size	MT.NO.	D	L
HSK63F-MTA1-100	1	25	100
HSK63F-MTA2-120	2	32	120
HSK63F-MTA3-140	3	40	140
HSK63F-MTA4-160	4	48	160

**HSK**

## Boring Bar Blank

### 基础柄



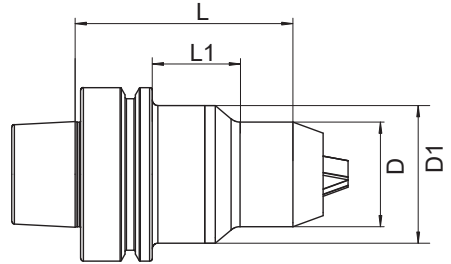
Size	D	L
HSK63F-65-160	65	160
HSK63F-65-250	65	250

Other sizes can be made by request.

**Precision Drill Chuck Holder**  
精密钻夹头刀柄

A ↗  
≤0.03

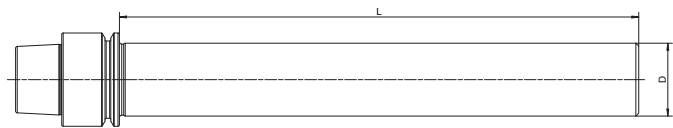
RPM  
G2.5/25000



Size	D	D1	L	L1	Capacity
HSK63F-CPU10-90	38	50	90	32	1-10
HSK63F-CPU13-100	50	-	100	-	1-13
HSK63F-CPU16-100	50	-	100	-	1-16

**Test Arbor**  
主轴检测棒

A ↗  
≤0.002



Size	D	L
HSK63F-40-300	40	300